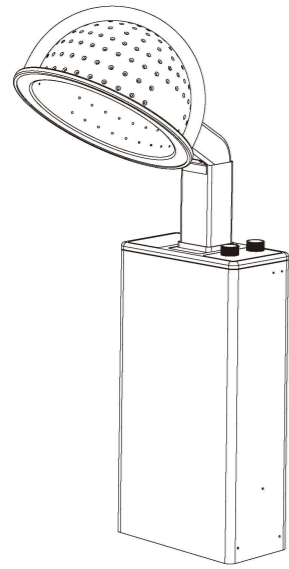


**MAXX HOT PRO SALON DRYER
 BR-2500
 INSTRUCTION MANUAL**



LIST OF PARTS

A: Hood, Elbow and Main Stack	B: Dryer Box
1 PC	1 PC

OPTIONAL WHEEL & HANDLE KIT

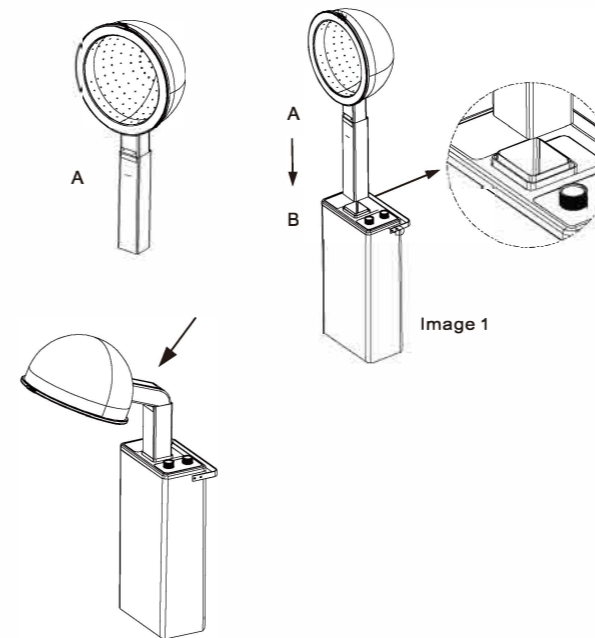
C: Screw M4X18	D: Screw M4X8	E: Wheels	F: Dryer Cart	G: Handle
6 PCS	4 PCS	2 PCS	2 PCS	1 PC



Rated Voltage : 120V/60Hz
 Rated Power : 1000 W

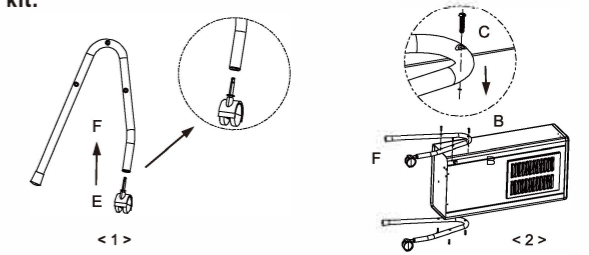
Made in China

INSTALLATION

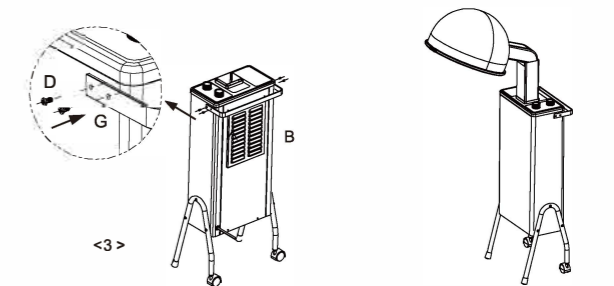


Step 1: To simplify installation, the dryer hood and main stack are pre-assembled during manufacturing. Carefully unpack the assembly from the shipping carton. Position the assembled unit within the dryer enclosure, ensuring the main stack is properly seated and securely connected. As shown in Image 1 above.

If you purchased the optional Wheel & Handle Kit, please follow the instructions below. Ensure to remove the dryer hood and main stack prior to assembling the wheel & handle kit.

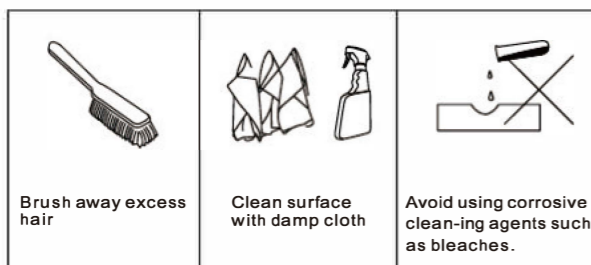


1. Mount the wheels into the designated lower holes on the dryer cart, as shown in the diagram above.
2. Position the dryer box on its side. Locate the three pre-drilled holes along the side panel and align the dryer cart accordingly. After alignment, hand-thread the three included screws (C). Ensure all screws are partially inserted before fully tightening.
3. Once all three screws are fully tightened, perform the same installation on the other side.



1. Align the handle holes with the pre-drilled holes on the sides of the dryer box.
2. Insert two screws (D) by hand into each side.
3. Once all four screws are hand-tightened, use a screwdriver to fully secure.

Product Care



Product Information

1. Enjoy your new Maxx Hot Pro Salon Dryer!
2. To clean wipe with a damp cloth only.
3. All services should be performed by an authorized technician.
4. If you have any questions or concerns, please contact our customer experience team at 912-335-4445

INSTALLATION, OPERATING & MAINTENANCE INSTRUCTIONS

INSTALLATION

- Please use proper care when mounting your dryer.
- Plug the supply cord into any 110-115 volt 60 cycle AC outlet.
- **Be sure dryer is AT LEAST 6 to 8 inches from the wall, to prevent damage to hood when it is raised.**

HOW TO OPERATE YOUR HAIR DRYER:

1. Raise hood to desired position for seating patron.

2. FOR INSTANTANEOUS HEAT, leave hood upright for 10 seconds before lowering. This builds up warm air immediately and eliminates cold stream of air hitting wet head. Place patron under dryer, lower hood to proper position for drying.
3. Set the dryer heat control to the degree of heat desired for comfortable drying.
4. Set the timer to desired time.
5. Do not tamper with the timer or thermostat on your dryer.

MAINTENANCE

Caution: Remove plug from wall socket before attempting any service or repairs.

Your dryer is equipped with low wattage heating elements ample for dependable drying and economical operating costs. Basically, the principle involved in this dryer is to regulate temperatures and air in the correct quantities in order to dry properly, rapidly and comfortably.

To clean your dryer, wipe with a damp cloth only.

This dryer is equipped with a foam filter. To operate efficiently, it is imperative that the flow of air intake be free and not obstructed by a dirty or clogged filter. For best results, inspect filter every week and clean if necessary. Cleaning is simple and rapid.

1. Remove filter from dryer.
2. Wash in warm soapy water and rinse.
3. Shake out excess water.
4. Replace filter.

To clean hood assembly:

1. Snap back hood on latch of the hood band. The hood band will spring apart and slip off hood. The inner hood will drop out.
2. Wash in warm water with a good soap or mild detergent. **Caution: DO NOT use solvents to clean or wash hoods.**
3. Remove outer hood with stack and use same procedure as the inner hood in washing.
4. Lay outer hood and stack on a flat surface
5. Insert inner hood and replace hood band. Position latch so that it will be at the back of the hood. Latch hook on hood band.

IMPORTANT SAFETY INSTRUCTIONS

When using electrical appliances, especially when children are present, basic safety precautions should always be followed, including the following:

READ ALL INSTRUCTIONS BEFORE USING

DANGER! As with most electrical appliances, electrical parts are electrically live even when the switch is off.

To reduce the risk of electrocution:

1. Always unplug appliance immediately after using.
2. Do not use while bathing.
3. Do not place or store appliance where it can fall or be pulled into a tub or sink.
4. Do not place in or drop into water or other liquid.
5. Do not reach for an appliance that has fallen into water. Unplug immediately.

WARNING : To reduce the risk of burns, electrocution, fire or injury to persons:

1. An appliance should never be left unattended when plugged in.
2. Close supervision is necessary when this appliance is used by, on or near children or invalids.
3. Use this appliance only for its intended use as described in this manual. Do not use attachments not recommended by the manufacturer.
4. Never operate this appliance if it has a damaged cord or plug, if it is not working properly, if it has been dropped or damaged, or dropped into water. Return the appliance to a service center for examination and repair.
5. Keep the cord away from heated surfaces.
6. Never block the air openings of the appliance or place it on a soft surface, such as a bed or couch, where the air openings may be blocked. Keep the air openings free of lint, hair, etc.
7. Never use while sleeping.
8. Never drop or insert any object into any opening.
9. Do not use outdoors or operate where aerosol (spray) products are being used or where oxygen is being administered.
10. Do not direct hot air toward eyes or heat sensitive areas.
11. Connect this appliance to a properly grounded outlet only. See grounding instructions.
12. Do not exceed the rating of outlet on the appliance.

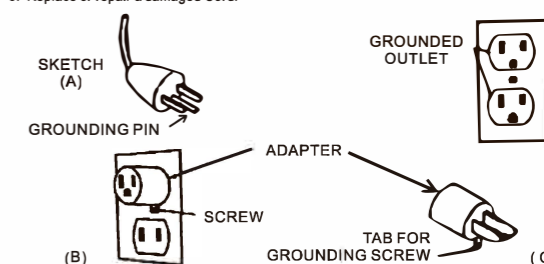
**- KEEP AWAY FROM WATER -
SAVE THESE INSTRUCTIONS**

DANGER-Improper use of the grounding plug can result in a risk of electric shock.

This appliance must be grounded. In the event of an electrical short-circuit, grounding reduces the risk of electric shock by providing a path of low resistance for the electric current. This appliance is equipped with a cord having a grounding wire with a grounding plug. The plug must be grounded into an outlet that is properly installed and grounded in compliance with all local codes and ordinances.

GROUNDING INSTRUCTIONS:

1. If repair or replacement of the cord or plug is necessary, do not connect the grounding wire to either flat blade terminal. The wire with insulation having an outer surface that is green with or without yellow stripes is the grounding wire.
2. Check with a qualified electrician or serviceman if the grounding instructions are not completely understood, or if in doubt as to whether the appliance is properly grounded.
3. This appliance is for use on a nominal 120 volt circuit, and has a grounding plug that looks like the plug illustrated in sketch A. If a properly grounded outlet is not available, a temporary adapter (like the adapter illustrated in sketches B and C), may be used to connect the plug to a 2-pole receptacle (as shown in sketch B). The temporary adapter should be used only until a properly grounded outlet (sketch A) can be installed by a qualified electrician. The green rigid ear, lug, etc. extending from the adapter must be connected to a permanent ground such as a properly grounded outlet box cover. Whenever the adapter is used, it must be held in place by the screw.
4. If it is necessary to use an extension cord, use only a three-wire extension cord that has a three-blade grounding plug and a three-slot receptacle, that will accept the plug on the appliance.
5. Replace or repair a damaged Cord.



Warranty

Your Hair Dryer has been carefully made by skilled workers and subject to thorough inspection and tests before shipment.

It is warranted to the original purchaser to be free of defects in material and workmanship of the motor for five years, the hood for three years, and one year on all other components from the date of purchase. This warranty does not apply to the finish of the cabinet.

By accepting this warranty the purchaser agrees that the obligation of the seller under this warranty shall be to repair or replace any part or parts found to be defective.

This warranty does not apply to the dryer or any part thereof which should reveal any tampering, misuse, accident or abuse, or use on electrical circuits other than those specified on the registered number plate located on back of dryer. Nor shall the seller be liable for damage to any person or to any property other than the dryer covered by the warranty.

Seller reserves the right to make changes in design and improvements in its dryers without imposing any obligation upon the Company to install same on products heretofore manufactured.

No person is authorized to change any of the terms of this warranty.