

SELF CONTAINED DROP-IN BASIN

OWNER'S MANUAL




CONTINUUM[®]
Opposite of Ordinary

Continuum Footspas, LLC • P.O. Box 363 Brookfield, WI 53008
Toll Free: 1 877 255 3030 • Telephone: 262 754 4900 • Fax: 262 754 4901 • continuumfootspas.com



SELF CONTAINED DROP-IN BASIN

Introduction

The entire team at Continuum® Footspas sincerely thanks you for choosing our Drop-in Basin. We fully realize you had a choice and we look forward to making absolutely sure you made the right choice. A tremendous amount of time and energy has gone into designing and manufacturing a very durable and functional Drop-in Basin.

Please take a moment to read this entire Owners Manual before installation and use.

SAVE THESE INSTRUCTIONS

If you have any questions, concerns or problems, please feel free to call us at 1 877 255 3030.

Very Important Safety Instructions

- Never bring or operate any electrical device in or near the Drop-in Basin.
- Never stand in the basin.
- Avoid excessive water temperatures. This can be dangerous and water temperature must be checked before each use.
- Maximum operational water temperature should **never** exceed 105° F (41° C)
- Maximum **supply** water temperature should **never** exceed 150° F (65° C)
Always check state or local codes to verify maximum supply temperatures.

SELF CONTAINED DROP-IN BASIN

Limited Warranty

Continuum Footspas has designed and manufactured the Drop-in Basin to the highest standards. Accordingly, Continuum Footspas expressly warrants the Drop-in Basin as follows:

To the original owner of the Drop-in Basin, Continuum Footspas may repair or replace, at its option, any Drop-in Basin found to be defective in material or workmanship upon inspection by a factory authorized representative of Continuum Footspas.

This Limited Warranty covers the following:

- **Dual Stream No Pipe™ Jet** - One (1) year from shipment from Continuum Footspas facility.
- **Other Components/Parts** - One (1) year from shipment from Continuum Footspas facility.
- **Accessories** - One (1) year from shipment from Continuum Footspas facility.

The exchange of a is limited to supplying a replacement of equal style. Owner is responsible for all labor and shipping costs necessary to replace a Drop-in Basin.

NO CONSEQUENTIAL, INCIDENTAL, CONTINGENT, INDIRECT, SPECIAL OR OTHER DAMAGES WILL BE ALLOWED WHATSOEVER. This limited warranty is null and void if the Drop-in Basin is removed from its original installation, or is not installed in accordance with specifications of Continuum Footspas, or national, state or local codes, regulations and ordinances. Furthermore, this limited warranty is null and void if the Drop-in Basin is subjected to improper installation or maintenance, negligence, improper cleaning or any other circumstances beyond Continuum Footspas control. In order for your Limited Warranty to be valid, your Drop-in Basin must be installed by a licensed professional in accordance with Continuum Footspas installation instructions.

EXCLUDED FROM LIMITED WARRANTY:

- 1) Unauthorized repairs.
- 2) Damage due to freight, accident, natural disaster and/or abuse.
- 3) Staining, fading or discolorization of the leg supports.
- 4) Damage or malfunctions due to improper installation including but not limited to, failure to comply with all national, state and local plumbing, electrical and building codes.
- 5) Fading, discoloration or staining of any part due to improper water additives or harmful cleaning agents or chemicals.
- 6) Damage to drain pump due to obstruction in drain hose.

For service or information regarding this limited warranty, please contact.

Continuum Footspas, LLC • P.O. Box 363 Brookfield, WI 53008

Toll Free: 1 877 255 3030 • Telephone: 262 754 4900 • Fax: 262 754 4901 • continuumfootspas.com

This limited warranty is to the original owner and is not transferable. The original owner agrees by using the Drop-in Basin, the obligation of Continuum Footspas shall not extend to indirect or contingent damages or injury. Furthermore, the obligations of Continuum Footspas are limited to those set forth herein. This limited warranty is the exclusive remedy and is in lieu of all other warranties, express or limited, including, but not limited to, any implied warranty of fitness or merchantability for a particular purpose. No distributor, dealer or other person has the right or authority to bind Continuum Footspas to changes to this limited warranty. Consequently, Continuum Footspas is not responsible for such warranties or representations.

ADDITIONAL PROVISIONS

- Any assistance Continuum Footspas provides to the original owner above and beyond the scope of this limited warranty does not constitute a waiver of such terms, limitations or exclusions. Furthermore, such assistance does not extend this limited warranty.
- Continuum Footspas shall not be liable for any other obligations or liabilities as a result of breach of contract of warranty, negligence or strict liability with regards to the Drop-in Basin.
- This Limited Warranty applies only to the Drop-in Basin installed in any one of the fifty states of the United States, the District of Columbia or provinces of Canada.

SELF CONTAINED DROP-IN BASIN

Very Important Requirements

Every Drop-in Basin must be installed by a licensed plumber and licensed electrician. Installation must comply with all national, state and local building codes and/or regulations. The Drop-in Basin will not operate properly unless it has sufficient water pressure and temperature, proper drainage and adequate electrical power.

Any inspections or approvals are the sole responsibility of the purchaser. Prior to installation, one should contact their local building inspector to make sure all local codes are complied with.

SAVE THESE INSTRUCTIONS

WARNING!!! Possible Health Risks

If your client experiences any pain or discomfort while using the Drop-in Basin, discontinue use immediately.

Clients whose feet or legs are inflamed for any reason or clients who have open wounds should **never** be allowed to use the Drop-in Basin. If there is any sign of fungal infection, fracture, swelling or persistent pain, clients should consult their physician before using the Drop-in Basin. Diabetic should always consult their physician prior to receiving a pedicure.

SELF CONTAINED DROP-IN BASIN

Important Utility and Installation Requirements and Instructions

SAVE THESE INSTRUCTIONS

Electrical Service

A separate, 120V, 60HZ, 20 amp GFCI protected grounded circuit **MUST** be used to supply power to each Drop-in Basin. Failure to do so renders the Limited Warranty null and void.

**NOTE: IF INSTALLED IN CANADA THIS UNIT MUST BE IN ACCORDANCE WITH
THE CANADIAN ELECTRICAL CODE, PART 1.**

Grounding and GFCI Requirements

WARNING - When using electrical products, basic precautions should always be followed, including the following:

- 1. DANGER: RISK OF ELECTRIC SHOCK.** Connect **ONLY** to a circuit protected by a ground-fault circuit-interrupter (GFCI).
- 2. GROUNDING IS REQUIRED.** Drop-in Basin **MUST** be installed by a qualified service representative and **MUST** be properly grounded. Also, the designated outlet **MUST** be grounded.
DO NOT IN ANY WAY MODIFY THE PLUG PROVIDED ON THE DROP-IN BASIN.
NO ADAPTER SHOULD BE USED WITH THE DROP-IN BASIN.

WARNING:

TO REDUCE THE RISK OF BURNS, ELECTRIC SHOCK, FIRE OR INJURY TO PERSONS:

- All servicing of the Drop-in Basin must be performed by authorized service personnel only.
- DO NOT operate the Drop-in Basin if it has a damaged cord or plug.
- Keep cord away from heated surfaces.
- DO NOT use outdoors.

Hot/Cold Water Supply and Drain

- All plumbing connections must conform to all national, state and local codes.
- Shut-off valves are strongly recommended.
- Maximum water temperature must not exceed 105° F (41° C)
- Maximum SUPPLY water temperature must not exceed 150° F (65° C)
- Hot/Cold water supply and drain connections are located in the back of pedicure chair.
- When utilizing optional factory installed drain pump, in-line backflow prevention is provided.
- If Drop-in Basin is plumbed utilizing drain pump and drain hose; the drain hose connecting the pedicure chair to the wall connection (drain) must be 3/4" ID.
- Size of supplied plumbing fittings:

Hot/Cold water supply: 1/2" NPT (male)

Drain Pump: 3/4" NPT (male)

SELF CONTAINED DROP-IN BASIN

Installation Instructions

EVERY DROP-IN BASIN MUST BE INSTALLED BY A LICENSED PLUMBER AND A LICENSED ELECTRICIAN. INSTALLATION MUST COMPLY WITH ALL NATIONAL, STATE AND LOCAL BUILDING CODES AND/OR REGULATIONS. FAILURE TO COMPLY WITH THESE CODES AND/OR REGULATIONS WILL RESULT IN THE LIMITED WARRANTY BEING NULL AND VOID.

Installation Instructions:

Utilizing a level, carefully adjust the four (4) leveling feet. It is important the Drop-in Basin is level. If utilizing a cabinet enclosure other than one supplied by Continuum Footspas, access to all internal components must be maintained. This may be accomplished with a removable side panel or access door.

After Drop-in Basin is positioned into the cabinet, leveling feet may be adjusted to level basin rim. A bead of waterproof silicone sealant should be placed around the entire basin rim where it meets the solid surface top. This will ensure a clean and waterproof seal around the basin.

If a cabinet is being built to accommodate Continuum's Drop-in Basin, a template for the opening may be downloaded at www.continuumfootspas.com. Since the template is to size, it must be printed on a large format printer. (possible printers include Fed Ex Kinkos)

If Drop-In basin was ordered without cabinet, it will be necessary to glue in-place the small black plastic cover that is provided. Use standard PVC primer and glue. (Not supplied) This cover should be positioned to hide the gap located towards the back of the basin.

The two (2) 11" pieces of black trim molding may be placed between the plastic side panels and the cabinet to cover any gaps.

Dual Stream NoPipe™ Jet

After basin is filled to proper level, turn Jet (7) on by pressing Chrome button (5) located on left side panel. To turn off, press chrome button a second time.

The NoPipe Jet has a special screw that secures the impeller to the motor shaft. The impeller is located behind the removable screen on each NoPipe Jet. Simply unscrew it and remove the impeller for cleaning. **(No tools are required; it is hand tightened).** Reattach the impeller utilizing the special screw and **hand tighten only.**

VERY IMPORTANT!

Jet covers and impeller are removable and must be cleaned between EVERY pedicure. To avoid damage, GENTLY twist off the cover. They will lock in place with a GENTLE turning motion. If the cover is installed correctly, the brand name "Luraco" will appear along the top of the cover.

WARNING: DO NOT ATTEMPT TO OPERATE JET WITHOUT WATER!

PLEASE NOTE: Drop-in Basins assembled and shipped during Wisconsin winter months are tested using a pink RV anti-freeze solution. It is perfectly normal for a small amount of this pink fluid to remain within the plumbing system. To eliminate any traces of RV anti-freeze, simply fill and operate your Drop-in Basin several times before actual use.

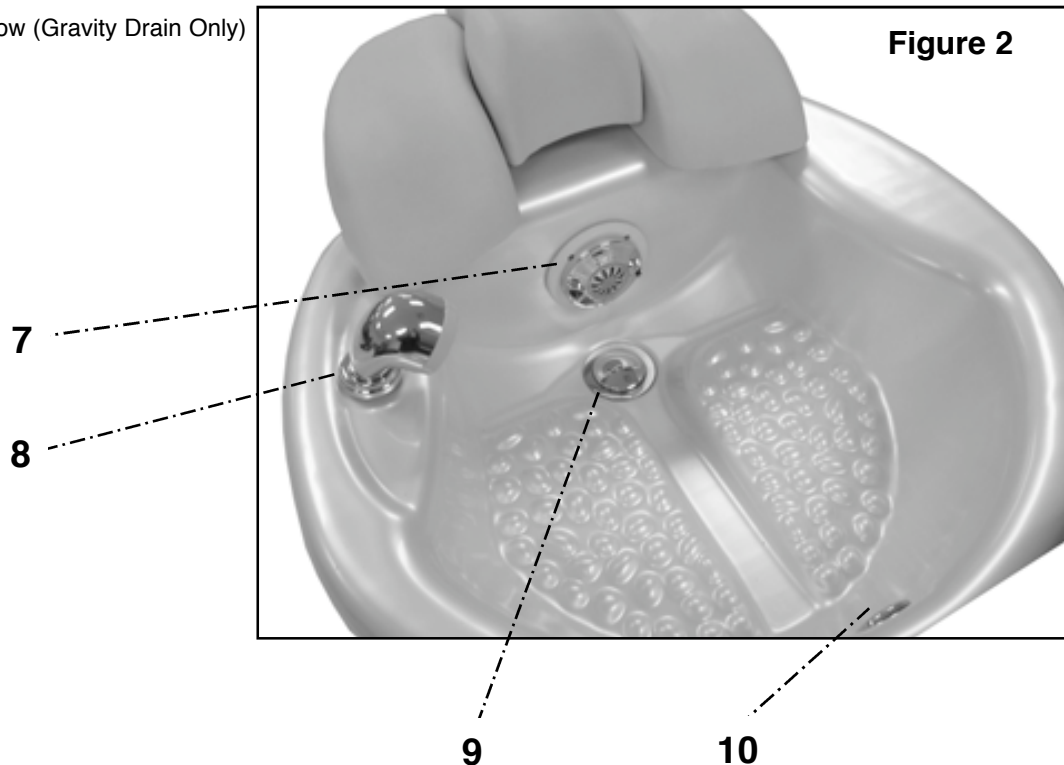
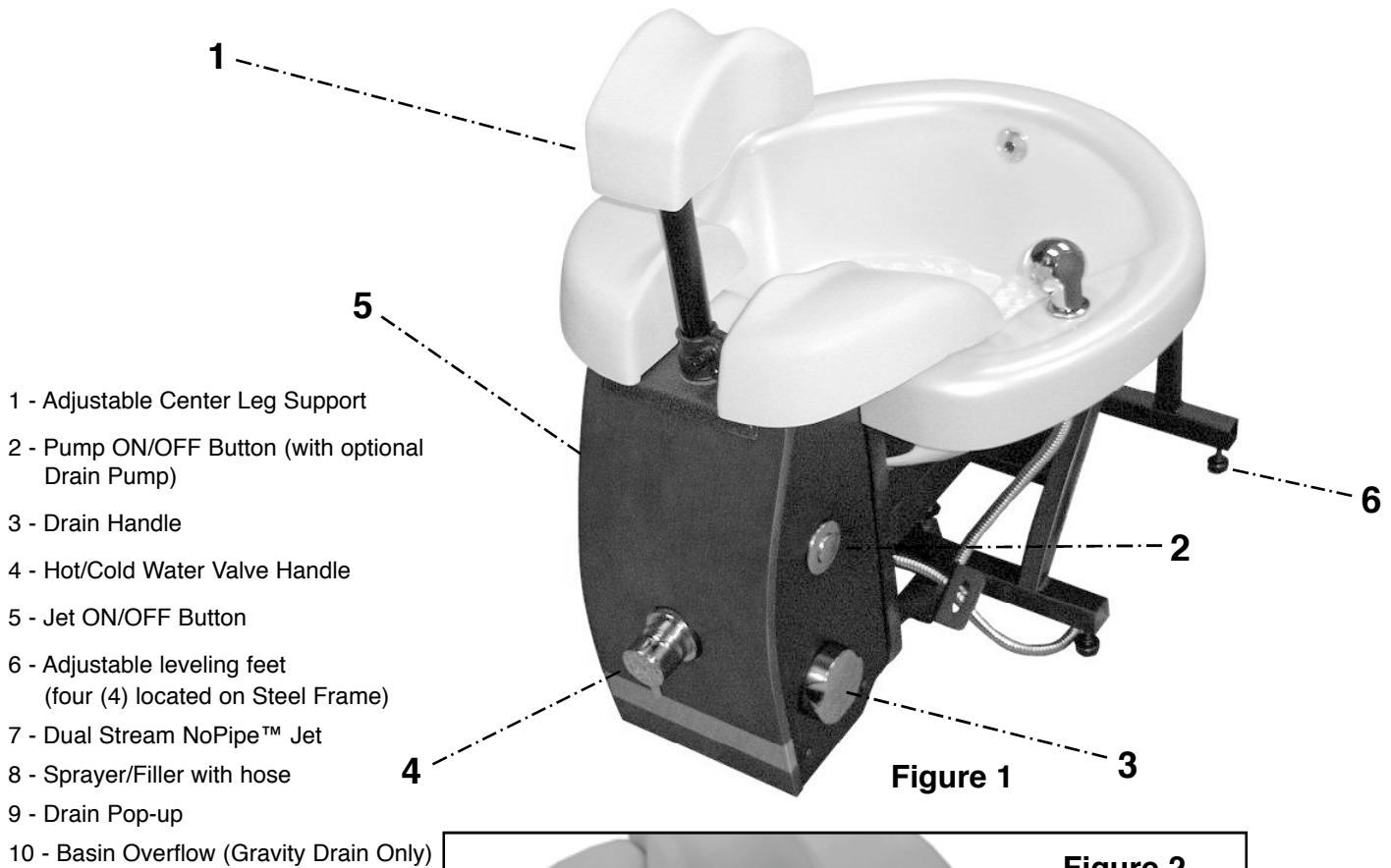
Adjustable Center Leg Support with Adjacent Foot Rests

An exclusive and patent pending Center Leg Support System (1) is another unique feature of the Drop-in Basin. Simply turn the black knob located underneath the center leg support to maintain the desired height of the leg support. It is necessary to firmly tighten the knob to ensure the leg support maintains the desired height. Loosen the black knob to lower the leg support.

IMPORTANT: All three (3) footrest are chemical (acetone) resistant. However, care should be taken to prevent repeated exposure to harsh chemicals. Continuum Footspas recommends the use of a small towel during the pedicure to help protect these cushions.

SELF CONTAINED DROP-IN BASIN

Features of the Drop-in Basin



SELF CONTAINED DROP-IN BASIN

Instructions Pertaining to a Risk of Fire, Electric Shock or Injury to Persons

Important Safety Instructions

WARNING - When using the Drop-in Basin, basic precautions **MUST** be followed, including the following:

- 1. READ AND FOLLOW ALL INSTRUCTIONS.**
- 2. WARNING:** RISK OF ACCIDENTAL INJURY OR DROWNING. CHILDREN SHOULD NOT USE THIS DROP-IN BASIN WITHOUT ADULT SUPERVISION.
3. Use the Drop-in Basin only for its intended use as described in this manual. Do not use attachments not recommended by the manufacturer.
- 4. WARNING:** RISK OF ELECTRIC SHOCK. DO NOT PERMIT ELECTRIC APPLIANCES (SUCH AS A HAIR DRYER, LAMP, TELEPHONE, RADIO, OR TELEVISION) WITHIN 5 FEET (1.5 M) OF THE DROP-IN BASIN.
5. Do not operate the Drop-in Basin without the jet cover attached to the NoPipe™ Jet.
6. The Drop-in Basin must be connected only to a supply circuit that is protected by a ground fault circuit-interrupter (GFCI). Such a GFCI should be provided by the installer and should be tested on a routine basis. To test the GFCI, push the test button. The GFCI should interrupt power. Push the reset button. Power should be restored. If the GFCI fails to operate in this manner, the GFCI is defective. If the GFCI interrupts power to the pedicure chair without the test button being pushed, a ground current is flowing, indicating the possibility of an electric shock. Do not use this Drop-in Basin. Disconnect the Drop-in Basin and have the problem corrected by a qualified service representative before using.
- 7. GROUNDING IS REQUIRED.** The Drop-in Basin **MUST** be installed by a qualified service representative and **MUST** be properly grounded. **ALSO, THE DESIGNATED OUTLET MUST BE GROUNDED. DO NOT IN ANY WAY MODIFY THE PLUG PROVIDED ON THIS UNIT. NO ADAPTER SHOULD BE USED WITH THE DROP-IN BASIN.**
- 8. SAVE THESE INSTRUCTIONS.**

WARNING

Any service that may be required **MUST** be performed by a qualified service representative.

SELF CONTAINED DROP-IN BASIN

SAVE THESE INSTRUCTIONS

DROP-IN BASIN OPERATING INSTRUCTIONS

NOTE: Please read these instructions carefully before operating the Drop-in Basin.

CAUTION: To avoid injury and irreparable damage, always remain seated when using the Drop-in Basin. **NEVER STAND ON OR IN THE BASIN.**

SPECIAL WARNINGS

- If you have any concerns regarding your health, consult your doctor before using this Drop-in Basin.
- Never use any pedicure basin on open wounds, or any area of the body that is swollen, burned, inflamed or where skin eruptions or sores are present.
- Consult your doctor before using this Drop-in Basin if you have diabetes, as diabetes can contribute to foot problems including decreased feeling or circulation to the feet.
- Use of this product should be pleasant and comfortable. Should pain or discomfort result, discontinue use and consult your physician.

WARNING: WHEN USING THE DROP-IN BASIN, BASIC PRECAUTIONS SHOULD ALWAYS BE FOLLOWED, INCLUDING THE FOLLOWING:

1. **READ AND FOLLOW ALL INSTRUCTIONS.**
2. **DANGER:** To reduce the risk of injury, do not permit children to use the Drop-in Basin unless they are closely supervised at all times.
3. Use the Drop-in Basin only for its intended use as described in this manual. Do not use attachments not recommended by manufacturer. Do not tamper with the Drop-in Basin.

After The Drop-in Basin is installed and the plumbing and electrical connections are made, clean and disinfect the basin before initial use.

YOU ARE REQUIRED TO CHECK WITH YOUR STATE BOARD FOR MANDATORY CLEANING AND DISINFECTING REQUIREMENTS AND PROCEDURES.

SELF CONTAINED DROP-IN BASIN

Operational Summary Technician Operated Controls/Features (Refer to Figure 1 and 2 for location of Controls/Features)

FILLING/SPRAYING

Locate the chrome hot/cold water valve handle (4) on the front of the Drop-in Basin. This valve handle controls both the flow of water and the temperature of water.

Note: The sprayer/filler (8) located on the right side of the basin has a dual function: It is both a sprayer and filler for the basin.

TO FILL

Lift and turn water valve handle (4), adjust water temperature and flow. When desired water temperature is achieved, close “Pop-Up” (9) in bottom of basin by turning Chrome Drain Handle (3) located on the right side panel. When water level reaches a point approximately one (1) inch ABOVE the top edge of the jet (7), shut water off by pressing down on handle (4). **Note: Jet MUST be fully submerged in water before jet is turned on.**

Note: If optional I-Fill™ (Auto Fill) was ordered, refer to Operating Instructions included in this Owner’s Manual.

TO DRAIN

With optional factory installed drain pump:

Step 1) Gently turn Chrome Drain Handle (3) located on the right side panel near the front of the Drop-in Basin. This activates the “Pop-Up” (9) located on the bottom of the basin allowing water to drain.

Step 2) Press chrome button (2) located next to the Chrome Drain Handle (3). This will activate the drain pump. When basin is fully emptied, depress button once again to turn pump off. **VERY IMPORTANT! When draining basin, ALWAYS perform Step 1 before Step 2. NEVER reverse the steps as this may cause the pop-up to become jammed in the waste assembly.**

Note: Drain pump will automatically turn off in two (2) minutes if button is not pressed a second time.

Gravity Drain

Step 1) Gently turn Chrome Drain Handle (3) located on the right side panel near the front of the Drop-in Basin. This activates the “Pop-Up” (9) located on the bottom of the basin allowing water to drain.

Cleaning and Disinfecting after Draining

WARNING: It is extremely important to follow the cleaning instructions provided in this manual. Failure to clean the Drop-in Basin adequately can result in serious health issues for your clients as well as the nail technician. Failing to clean your Drop-in Basin may also cause it to work improperly. Regular cleaning will keep your Drop-in Basin in good working condition.

YOU ARE REQUIRED TO CHECK WITH YOUR STATE BOARD FOR MANDATORY CLEANING AND DISINFECTING REQUIREMENTS AND PROCEDURES.

SELF CONTAINED DROP-IN BASIN

Operating Instructions for I-Fill™ System (Auto Fill)

(Auto Fill is a Factory Installed Option)

Step #1) LIFT AND TURN chrome handle of the Hot/Cold water valve (6) upwards. Handle is located in front of spa. Make sure drain Pop-Up (13) is in the up position allowing water to drain out of the basin.

Step #2) Press chrome “I-Fill” button to begin water flow. (If spa has optional drain pump, one must also start pump by pressing “Drain” button). When water reaches desired temperature; turn Drain Handle (5) to lower Pop-Up (13). Basin will continue to fill. NOTE: Every time “I-Fill” button is pressed, a short beep may be heard. This is perfectly normal.

Water will automatically shut off upon reaching preset level and jet will begin running. Jet may be shut off at any time by pressing “I-Fill” button.

Press and hold “I-Fill” button to add additional water to basin.

NOTE: If water falls below sensor electrodes located on jet body (11), jet will turn off. Additional water must be added to cover sensors allowing jet to turn on.

Adjusting Sensor Delay Time Setting

There is a control box located underneath the black, right side (when facing the spa) shroud or side panel. Removing a shroud or panel is quite easy.

On the side of the control box is a green LED light. Next to it is a blue circle control. Using a small screwdriver, one may turn the arrow inside the circle from 5 seconds to 55 second. This is the time delay for shutting off the water after the water reaches the sensor electrodes located on the jet body (11).

While the time delay has been preset at the factory, depending on water pressure and other factors, this adjustment allows one to control the level of the water before the jet turns on.

SELF CONTAINED DROP-IN BASIN

User Maintenance Instructions Cleaning and Disinfecting

IMPORTANT

YOU ARE REQUIRED TO CHECK WITH YOUR STATE BOARD FOR MANDATORY CLEANING AND DISINFECTING REQUIREMENTS AND PROCEDURES.

The following procedures are important guidelines that will help in keeping your Drop-in Basin clean and trouble free for years. It is extremely important to clean and disinfect each and every Drop-in Basin after each pedicure, after the last pedicure of the day and once a week for overnight cleaning.

A SPECIAL NOTE PERTAINING TO BLEACH

While bleach seems to be used extensively for cleaning and disinfecting of Drop-in Basin, it is NOT recommended nor is it effective. Moreover, excessive use of bleach may greatly reduce the longevity of your Drop-in Basin internal components (i.e. pumps, jet, waste assembly, etc.). Excessive and repeated use of bleach may also void your warranty. **CONTINUUM FOOTSPAS STRONGLY RECOMMENDS NOT USING BLEACH TO CLEAN YOUR BASIN.** As always, you are required to check with your state board for mandatory cleaning and disinfecting requirements and procedures.

Continuum Footspas strongly recommends “Splish Splash One-Step Disinfectant.” The following page outlines product benefits for all pedicure basins together with contact information.

After Each Client Procedures

1. **Drain** all water from the basin.
2. **Scrub all visible residue** from the inside walls of the basin with a brush or liquid soap and water. Use a clean and disinfected brush with a handle. Brushes must be cleaned and disinfected after each use.
3. **Rinse** the basin with clean water.
4. **Refill the basin** with clean water and circulate the correct amount (read the label for mixing instructions) of the EPA Registered Hospital Liquid Disinfectant through the basin for 10 minutes.
5. **Drain, rinse and wipe** dry with a clean **paper** towel.



One-Step Disinfectant

EPA APPROVED AND LICENSED IN ALL 50 STATES!

Introducing:
Splish Splash One-Step Disinfectant
Clean and Disinfect your Salon with just One Product!

PEDICURE SPA

For Pedicure Spas and Tubs, add one (1) Fluid Ounce of Splish Splash One-Step Disinfectant for each one (1) gallon of water. Allow water to circulate for 10 minutes. Drain and rinse with clean water.



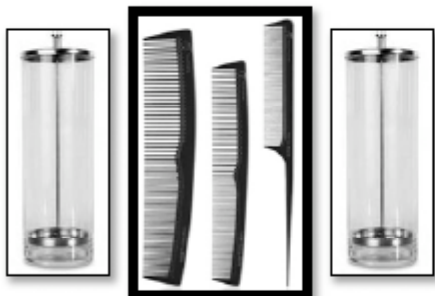
TOOL DISINFECTION

For tool disinfection, mix one (1) Fluid Ounce of Splish Splash One-Step Disinfectant with one (1) gallon of water. Allow tools to soak for ten (10) minutes. Remove tools from solution. Rinse with clean water and dry.

HARD SURFACES

For hard non-porous surfaces throughout salon, including manicure stations and countertops, mix one (1) Fluid Ounce of Splish Splash One-Step Disinfectant in one (1) gallon of water.

For spray bottle, mix 1/4 Fluid Ounce of One Step Disinfectant in 32 Ounces of water. Sponge or spray on, wait ten (10) minutes and wipe dry.



PLASTIC INSTRUMENTS

For plastic instruments, mix one (1) Fluid Ounce of Splish Splash One-Step Disinfectant with one (1) gallon of water and fill your sterilization jars. Plastic instruments may remain immersed until ready for use.

Additional Uses: To disinfect and sanitize tanning beds and towels.

One-Step Disinfectant by Splish Splash...
The Economical Way To Meet All Your Salon's Disinfectant Needs.

Please read Splish Splash One-Step Disinfectant label for complete usage instructions.

www.splishsplashcleaners.com - (847) 438-0800

SELF CONTAINED DROP-IN BASIN

End of Each Day Cleaning Procedures

1. **Remove** the cover and impeller from the NoPipe™ Jet. No tools are required. Simply grip the cover and gently twist off. To replace, position cover on front of jet, gently twist and lock. Turn “left handed” screw to remove impeller.
2. **Clean** the screen and the area behind it with a brush, liquid soap and water to remove all visible residue and replace properly cleaned screens and impeller.
3. **Fill** the basin with warm water and chelating detergent and circulate the chelating detergent through the spa system for 5-10 minutes (follow manufacturer’s instructions).
4. **Drain** the soapy solution and rinse the basin.
5. **Refill the basin** with clean water **and circulate** the correct amount (read the label for mixing instructions) of the EPA Registered Liquid Disinfectant (Splish Splash) through the basin for 10 minutes.
6. **Drain, rinse** and wipe dry with a clean **paper** towel.
7. Allow the basin to dry completely.

At least once each week overnight procedures:

After completing the End of Each Day procedures:

1. Do not drain the liquid disinfectant solution - Turn off the unit and leave the disinfecting solution in the Drop-in Basin (at least 6 to 10 hours).
2. In the morning drain and rinse.
3. Refill the basin with clean water and flush the system.

SELF CONTAINED DROP-IN BASIN

Care and Maintenance

Wood Surfaces

Maintaining the beautiful wood finish on the front of the Drop-in Basin is easy. Simply clean and polish with any good quality liquid or paste wax polish on a regular basis. While the wood finish is extremely durable and water resistant, it is advisable to wipe dry any water that may splash onto the wood. By doing so, one minimizes the occurrence of dried water spots as well.

If by chance the wood becomes scratched, simply use any light to medium cherry touch up stain. These touch up “pens” are readily available at most hardware stores.

Basin

The Drop-in Basin is extremely durable and stain resistant. Additional cleaning over and above your state’s cleaning and disinfecting procedures is not normally required.

NOTE: NEVER USE ABRASIVE SCOURING PADS ON THE PLASTIC BASIN OR THE THREE (3) FOOTREST PADS LOCATED IN FRONT OF THE BASIN.

ADJUSTABLE CENTER LEG SUPPORT (3) WITH ADJACENT FOOTRESTS

Leg Supports

Once again, a mild detergent and warm water is all that is needed to clean the three (3) footrests. However, as previously noted, care should be taken to prevent nail polish or acetone from coming in contact with these cushions. These products may damage or discolor the outer “skin” of the cushions.

NOTE: NEVER USE ABRASIVE SCOURING PADS ON THE THREE FOOTRESTS PADS LOCATED IN FRONT OF THE BASIN.

SELF CONTAINED DROP-IN BASIN

After Client Pedicure Cleaning Log

Date (m/d/yr): _____ Station # _____ Serial # _____

Service No.	Client	Time	Staff
1			
2			
3			
4			
5			
6			
7			
8			
9			
10			

Date (m/d/yr): _____

Service No.	Client	Time	Staff
1			
2			
3			
4			
5			
6			
7			
8			
9			
10			

Date (m/d/yr): _____

Service No.	Client	Time	Staff
1			
2			
3			
4			
5			
6			
7			
8			
9			
10			