



# PRODUCT SPECIFICATION SHEET

**Part #:** 5711-32  
**Description:** European Backwash Shampoo System

**Standard Features:**

- #3000 Marble Products bowl
- 550 faucet & vacuum breaker
- Rear storage
- Molded bottle well
- 
- 
- 
- 
- 

*Eight Color Choices: Black, Shaker Cherry, Cafelle, Fusion Maple, Limber Maple Wild Cherry, Brighton Walnut, Graphite Nebula*



*(Forty additional choices available for 10% upcharge)*



**Specifications:**

EUROPEAN BACKWASH SHAMPOO SYSTEM with #3000 bowl, 550 faucet, vacuum breaker, rear storage, and molded bottle well. 31 1/2"W x 17 1/2"D x 33 1/2"H. Right-handed, as pictured, unless specified otherwise. Install two, three, or four side-by-side with joining reveals ... specify at the time of order. Pictured 1850L Shampoo Chair is ordered separately.

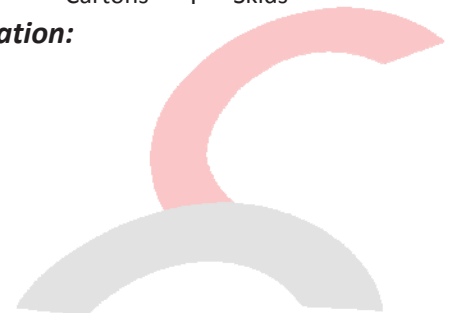
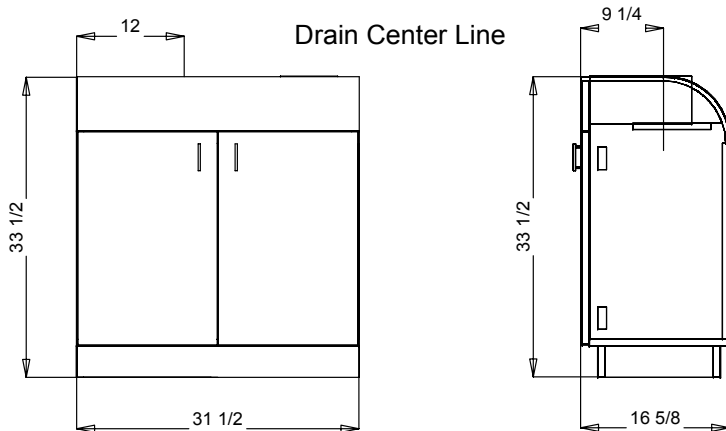
**Optional Features:**

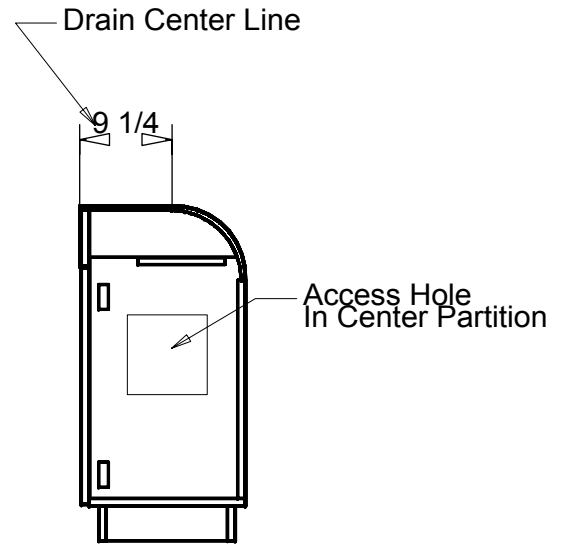
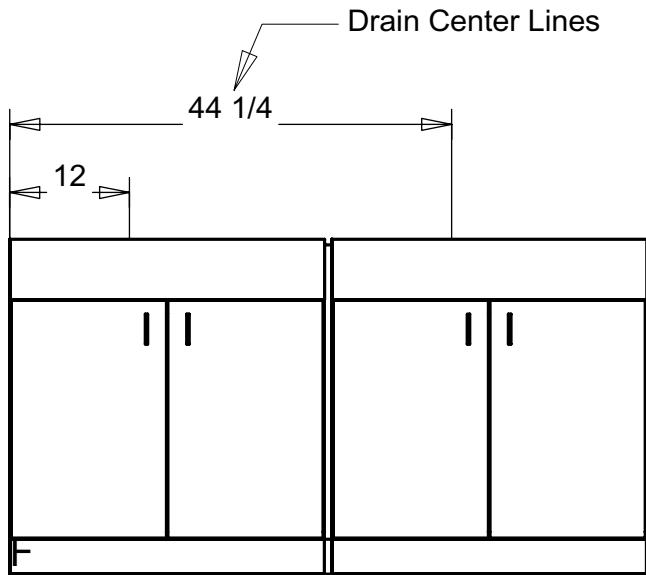
- Available right or left handed, specify when ordering
- Connect multiple units together with joining reveal
- 
- 

**Shipping and Assembly/Installation Information**

Assembly Required:  Yes  No  
 Electrical Required:  Yes  No  
 Plumbing Required:  Yes  No  
 Ship Dimensions 32 "W x 48 "D x 45 "H  
 Total Ship Weight 156 LBS  
 # of Ship Pieces Cartons 1 Skids

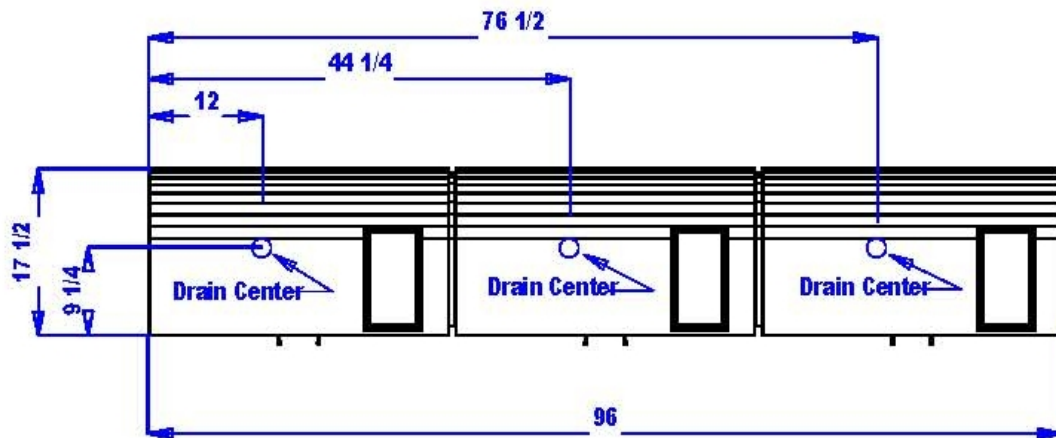
**Additional Information:**





**Bolt the left and right cabinets to center cabinet with (4) 1 1/4" beauty bolts. Bolt through interior side panels.**

## PLUMBING SPECIFICATIONS



 Collins Manufacturing  
2000 Bowser Road  
Cookeville, TN 38506

This image is the property of Collins Manufacturing Company and is protected under copyright law.