

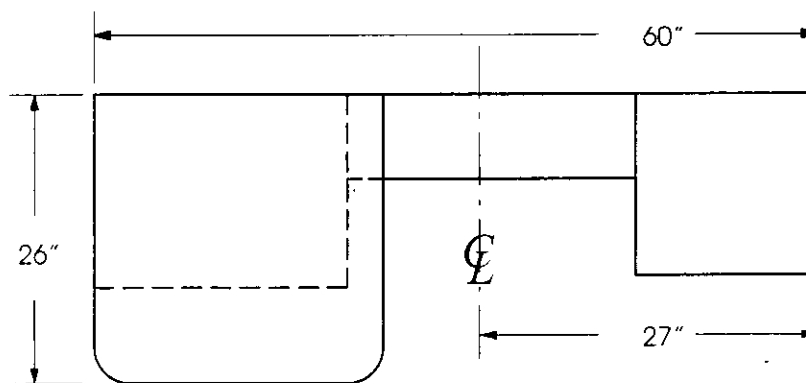
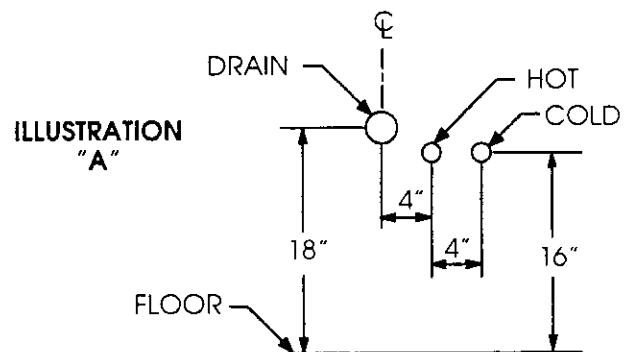
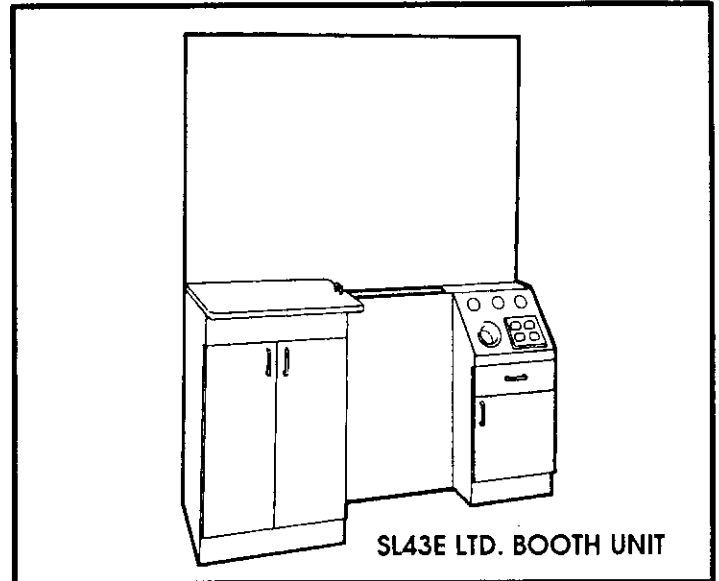
SL43 LTD BOOTH UNIT INSTALLATION AND PLUMBING INSTRUCTIONS

IMPORTANT NOTES:

A. It is the responsibility of the owner and/or the installers to confirm that the installation meets local codes regarding plumbing, materials, venting, etc.

B. Read through the instructions before you begin work. Cabinetry is heavy. Lift, move and handle carefully. Because we cannot anticipate all types of wall and floor constructions, you must obtain some fasteners for the installation locally.

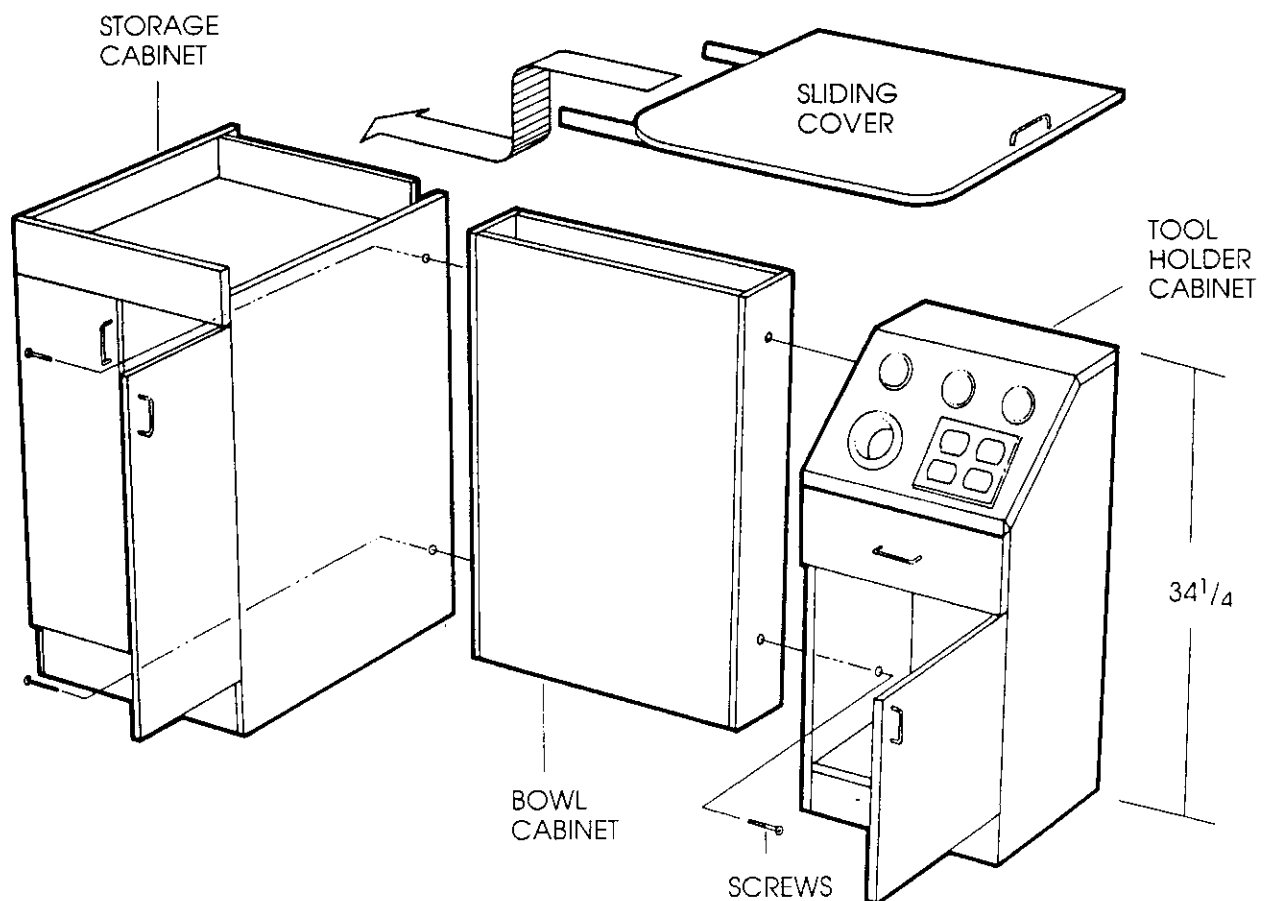
1. Remove the cabinets from the cartons.
CAUTION! Open the cartons carefully. Staples are sharp.
2. Determine the final location of the unit. Mark hole locations where plumbing supply and drain lines will come through the front panel of the bowl cabinet. Measure carefully! For rough-in plumbing, see illustration "A".
3. Cut or drill appropriately sized holes for the plumbing lines. Use a hole saw or jig saw. Apply tape to the laminate face to avoid scratching. Care taken at this step will ensure a neat, professional installation.



WARNING: The cabinet may not support the weight of the bowl and load if it is not permanently secured to the floor. Personal injury could result if the cabinet pulls away from the wall.

CABINET ASSEMBLY

4. Install the sliding bowl cover:
 - a. Locate the two slide mechanisms under the bowl cover.
 - b. Slide the ball-bearing section of each mechanism so it projects out from under the cover.
 - c. Insert the ball-bearing sections into the tracks on top of the storage cabinet.
 - d. Push the bowl cover all the way onto the tracks, until it's over the storage cabinet.
NOTE: The slide mechanisms have locks to keep the cover from accidentally sliding off the cabinet.
 - e. To disengage the cover, push on the black plastic fingers on the slide mechanisms and pull the top out of the tracks.
5. Assemble the storage cabinet and the tool holder cabinet to the bowl cabinet with the screws provided.
6. Place the cabinet assembly in its final location. You may fasten the unit to the wall with fasteners appropriate for your wall construction (obtain locally).
7. Install the bowl according to local codes. Refer to the instructions packed with the bowl.
8. Have a qualified electrician connect the outlet.
NOTE: because of the presence of water at this station, the circuit should be equipped with a ground-fault interrupter (GFI).



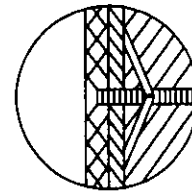
! CAUTION !

- Damage or personal injury may result if you do not use proper fasteners for your wall construction.
- To determine the type of fastener needed to install cabinets or mirror clips, use the following information.
- Because wall constructions vary, Belvedere USA Corporation does not provide wall anchors for installation.
- Be sure that you select suitable fasteners appropriate to your particular wall construction. If your wall construction is different from the following types, consult a contractor for recommended suitable fasteners.

GYPSUM WALL:

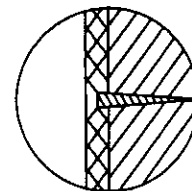
Recommend using expansion anchors or toggle bolts. Size to be determined by interior wall structure and weight of unit.

Gypsum does not have sufficient strength to support a cabinet. Cabinets must be secured to the interior wall structure.



WOOD WALL OR CABINET:

Recommend using wood screws. Size to be determined by interior wall structure or cabinet panel and weight of unit.



CONCRETE WALL:

Recommend using expansion anchors. Size to be determined by interior wall structure and weight of unit.

