



PRODUCT SPECIFICATION SHEET

Part #: 6603-33

Description: Kurve Formula Styling Station

Standard Features:

- LED lights
- Etched glass accent
- 2 drawers
- Easy-access pull-out tool panel
- Cord drop
- Upper storage shelves
- Includes top-to-bottom wire chase
- Duplex outlet
- Six outlet power switch

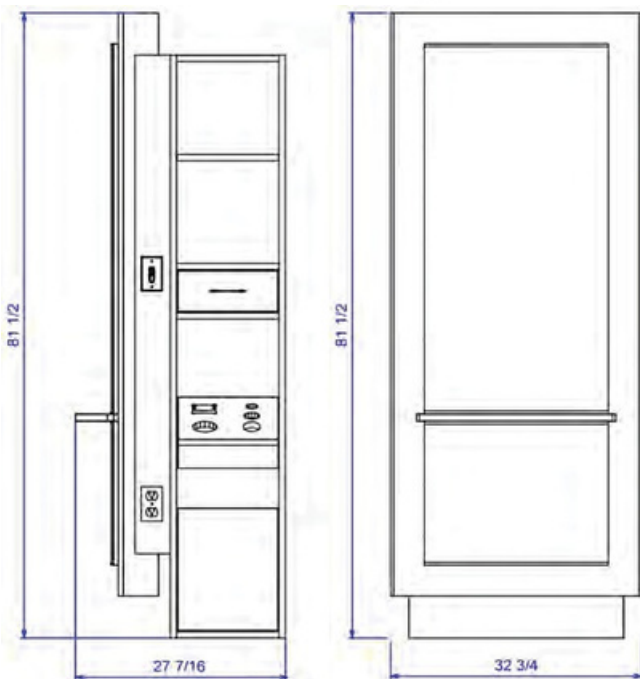
(Forty nine laminate selections + additional choices available for 10% upcharge)



Specifications:

NEW for 2016

This smart contemporary design will take your salon to the next level. Full featured station with each stylist having a drawer, easy-access pull-out tool panel, cord drop, and upper storage shelves. Includes top-to-bottom wire chase, duplex outlet, six-outlet power switch, and more.



Shipping and Assembly/Installation Information

Assembly Required: YES

Electrical Required: YES

Plumbing Required: NO

Ship Dimensions

Total Ship Weight 530 LBS

of Ship Pieces 2

Additional Information:

32"W x 48"L x 90"H 340lbs

32"W x 84"L x 20"H 190lbs