

**Part #:** 6604-33  
**Description:** Kurve Back-to-Back Formula Styling Station

**Standard Features:**

- LED lights
- Etched glass accent
- 2 drawers
- Easy-access pull-out tool panel
- Cord drop
- Upper storage shelves
- Includes top-to-bottom wire chase
- Duplex outlet
- Six outlet power switch

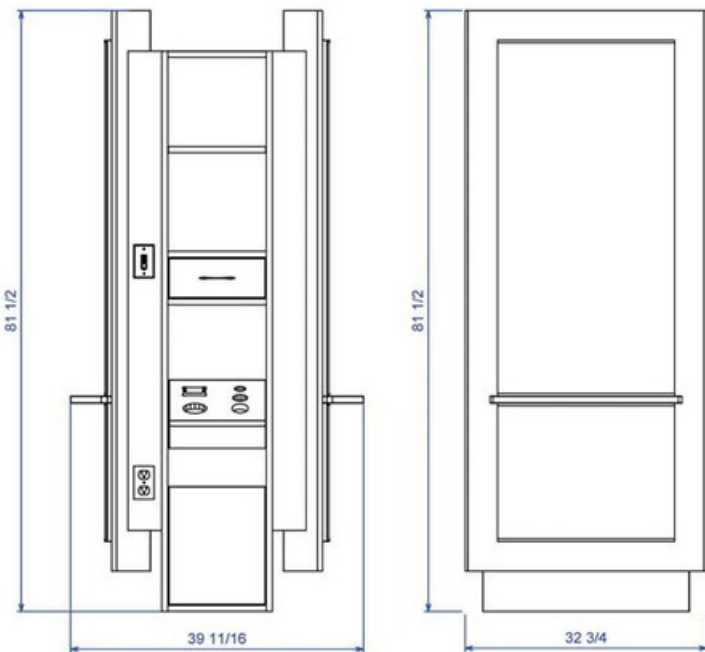
(Forty nine laminate selections + additional choices available for 10% upcharge)



**Specifications:**

NEW for 2016

This smart contemporary design will take your salon to the next level. Full featured station with each stylist having a drawer, easy-access pull-out tool panel, cord drop, and upper storage shelves. Includes top-to-bottom wire chase, duplex outlet, six-outlet power switch, and more.



**Shipping and Assembly/Installation Information**

- Assembly Required: YES
- Electrical Required: YES
- Plumbing Required: NO
- Ship Dimensions
- Total Ship Weight 685 LBS
- # of Ship Pieces 2

**Additional Information:**

- 32"W x 48"L x 90"H 370lbs
- 38"W x 84"L x 26"H 315lbs